

SMPSNY



Presenters:

Dominick Ballesta

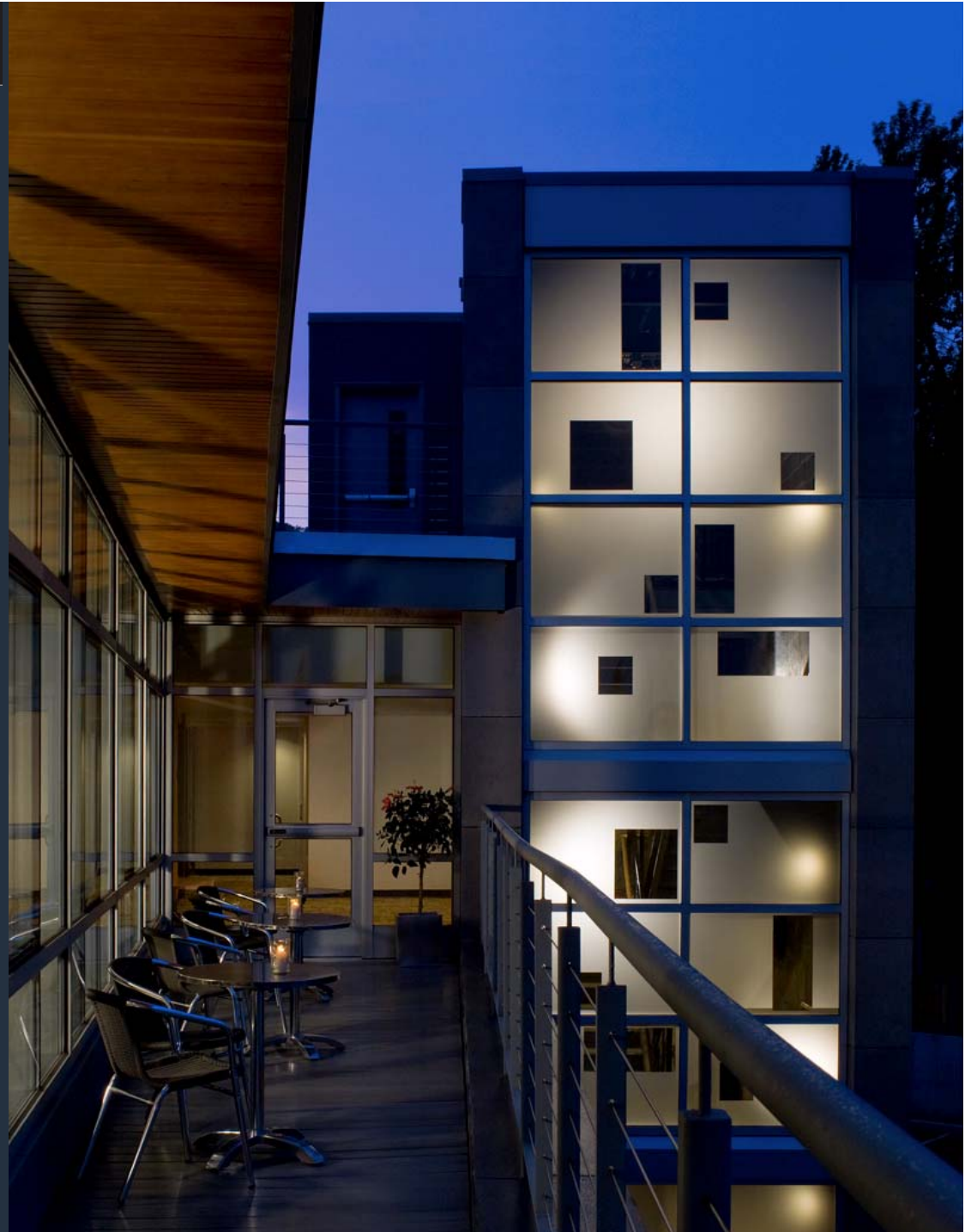
Managing Director
Jacob Burns Film Center

Erik A. Kaeyer, AIA, LEED AP

Vice President
Kaeyer, Garment & Davidson Architects &
Engineers, PC

James Dolan, P.E. LEED AP

Principal
O'Dea Lynch Abbattista Consulting
Engineers



The Media Arts Lab @ Jacob Burns Film Center



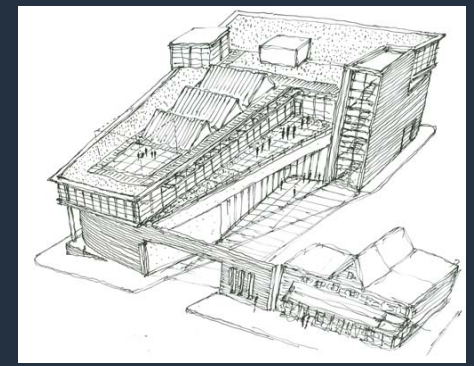
Media Arts Lab Building

- Media Arts Lab Building envisioned to be a flagship for both 21st Century literacy education and for sustainable construction in Westchester
- The building and its features are another track of our educational programs – to de-mystify the techniques and technologies of sustainable construction for the general public
- Owning a sustainable building is a commitment to the local community in which we live and work, both as an educational facility and as a cornerstone of the local and regional economy.
- The response to the community has been overwhelming with many groups taking advantage of our open tours to understand the choices made in creation.

Photos: David Lamb Photography

Early Design Process

- **Collaboration** – Teamwork, idea and knowledge sharing
- **Inspiration** – tours of new facilities in the region
- Decision at the beginning of the process to pursue USGBC - **LEED Certification**
- **Sustainable Design Charrettes** with owner - 5 categories site, water, energy, materials, indoor air quality



Sustainable Features - Site

Site and Urban Considerations:

- **Revitalization** of existing site – Existing building **deconstructed** / 87% of material diverted from landfill
- **Location** – public transportation and pedestrian access to downtown area
- Building oriented to maximize **daylight** but limit solar heat gain - deep roof overhangs
- Site lighting designed to minimize **light pollution**
- **Bicycle** storage – shower facilities
- JBFC has aided the **revitalization** of a suburban downtown - programs and enrichment for which the community would otherwise travel to NYC



Sustainable Features - Exterior

Energy Considerations:

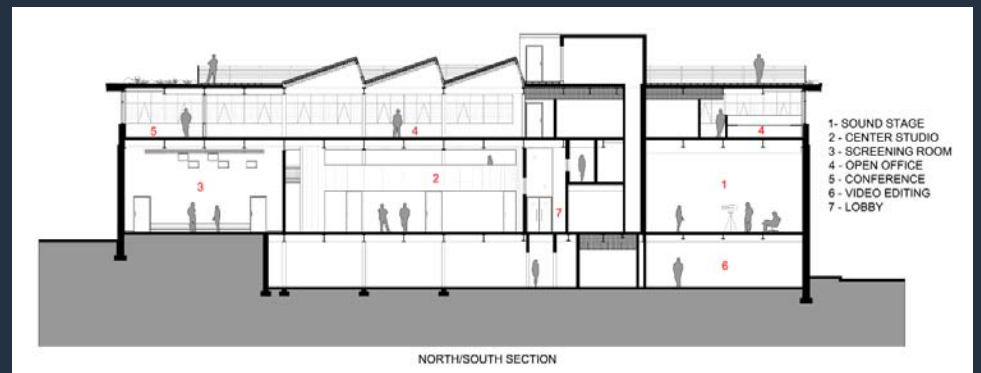
- **High performance envelope** (highly insulated, solar-reflective, low-e thermally broken, glazing system)
- **Local, Recycled content materials** – precast concrete panels
- **Natural ventilation** and day lighting – operable windows
- **Photovoltaic panels** – on-site electricity generation
- **Vegetative 'Green' roof system** – Reduce stormwater and solar heat gain
- Native, drought tolerant **landscaping** – no irrigation after initial growth and local species habitat



Sustainable Features - Interior

Interior Quality and Material Considerations:

- **Day-lit spaces** with expansive views - overhangs, fritted glazing and perforated shades
- **Fresh air** - natural ventilation through operable windows and high level of outdoor air supply through HVAC system
- **Materials** used that will minimally outgas ensuring clean, safe, non-allergenic indoor air quality



Sustainable Features - Interior

Interior Aesthetic

- **Creative Industrial** style – honest, exposed building tectonics
- **Flexible Spaces** – ever changing ways for people to express themselves



Sustainable Features -

Overall Aesthetic

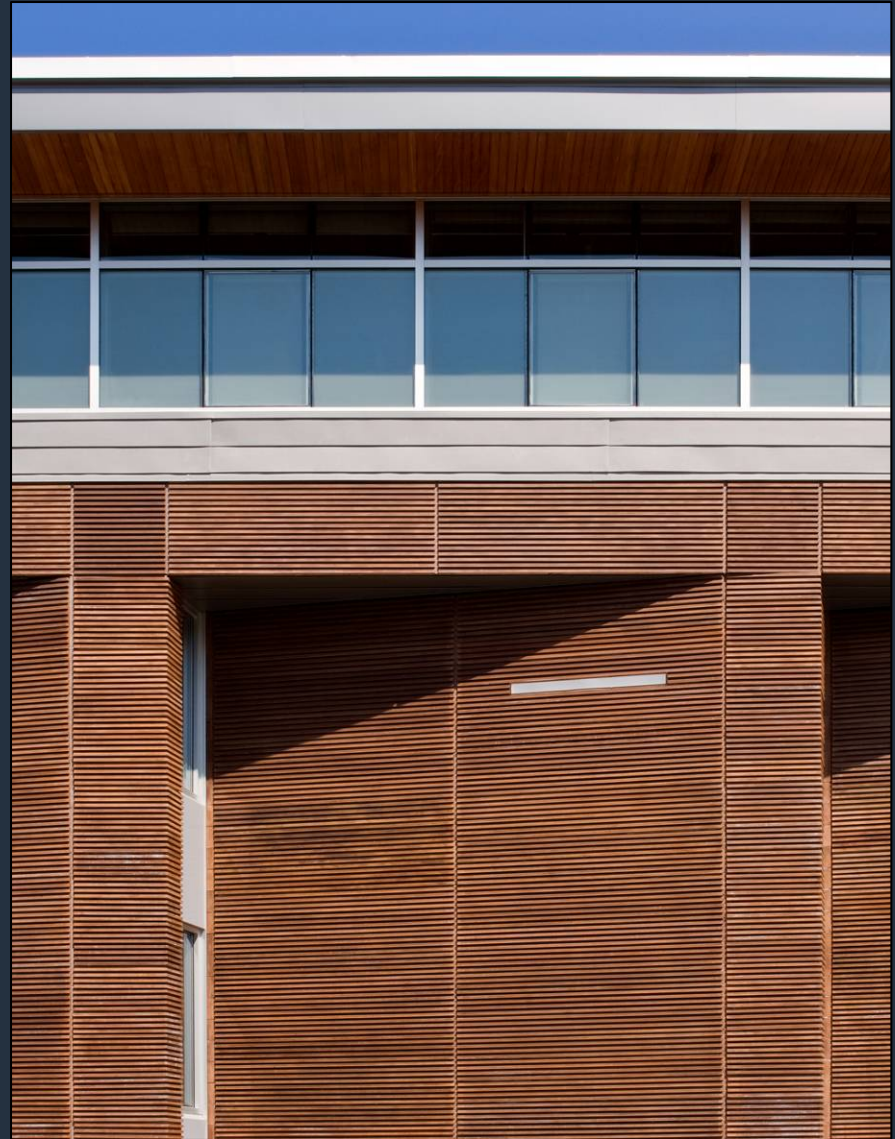
- Theatrical – **Flexible** – Dynamic



Sustainable Features

Interior Quality and Material Considerations:

- 51% of the wood products used came from **certified, well-managed forests**
- 21% (by value) of architectural materials in the building contain **recycled content** and 35% were **manufactured regionally** from raw materials sourced within a 500-mile radius of the building



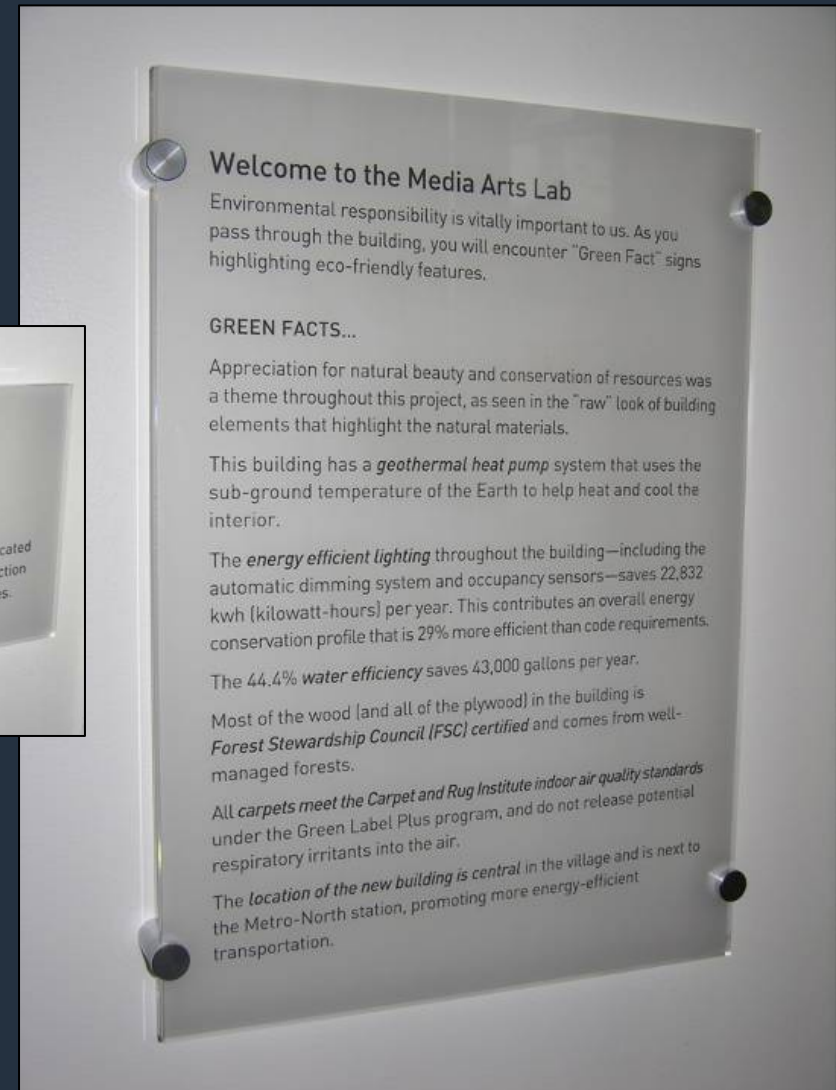
Sustainable Features – Education

Water Efficiency Considerations:

- **Water Conservation** – low-flow fixtures with intelligent controls lead building to save 41% on volume of water used per year compared to a typical building of the same size and program

Educational Considerations:

- “**Green Fact**” signs throughout the building and a real-time kiosk in the lobby monitoring performance educate visitors about sustainable features
- JBFC offers monthly **tours** to the community



Sustainable Features - Systems

Energy Considerations:

- Ground-source heat pump - **geothermal** system for heating and air conditioning with high-efficiency condensing gas boiler backup
- **Lighting efficiency:** energy efficient fixtures & smart controls - daylight dimming and occupancy sensors
- **Heat recovery** of exhaust air stream
- Demand-controlled **ventilation** detects and reduces air flow when areas are not occupied



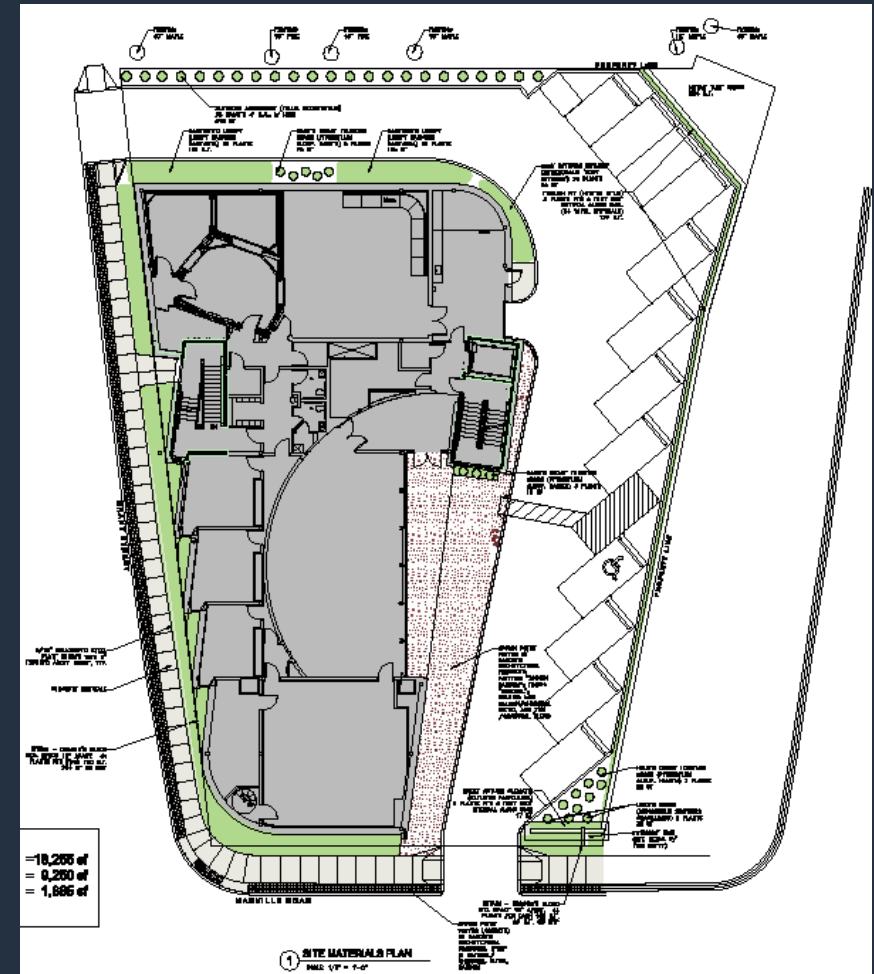
LEED NC 2.2 Certification Points



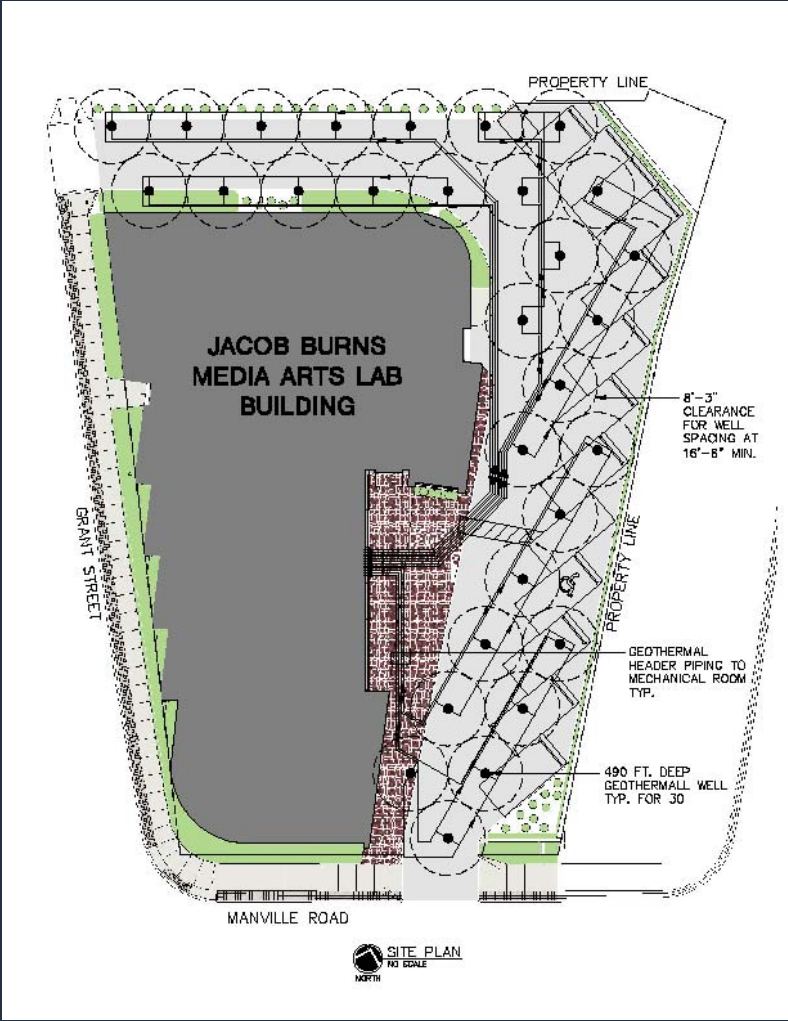
	Points Pursued	LEED NC 2.2 Point Range
Gold	46	39-51
Sustainable Sites	8	14
Water Efficiency	4	5
Energy & Atmosphere	10	17
Materials & Resources	7	13
Indoor Environmental Quality	12	15
Innovation & Design Process <ul style="list-style-type: none"> - Busing program for students that would normally be driven - Educational exhibit and film - 100% green power for two years - 40% water efficiency - LEED APs on the team 	5	5

Approach

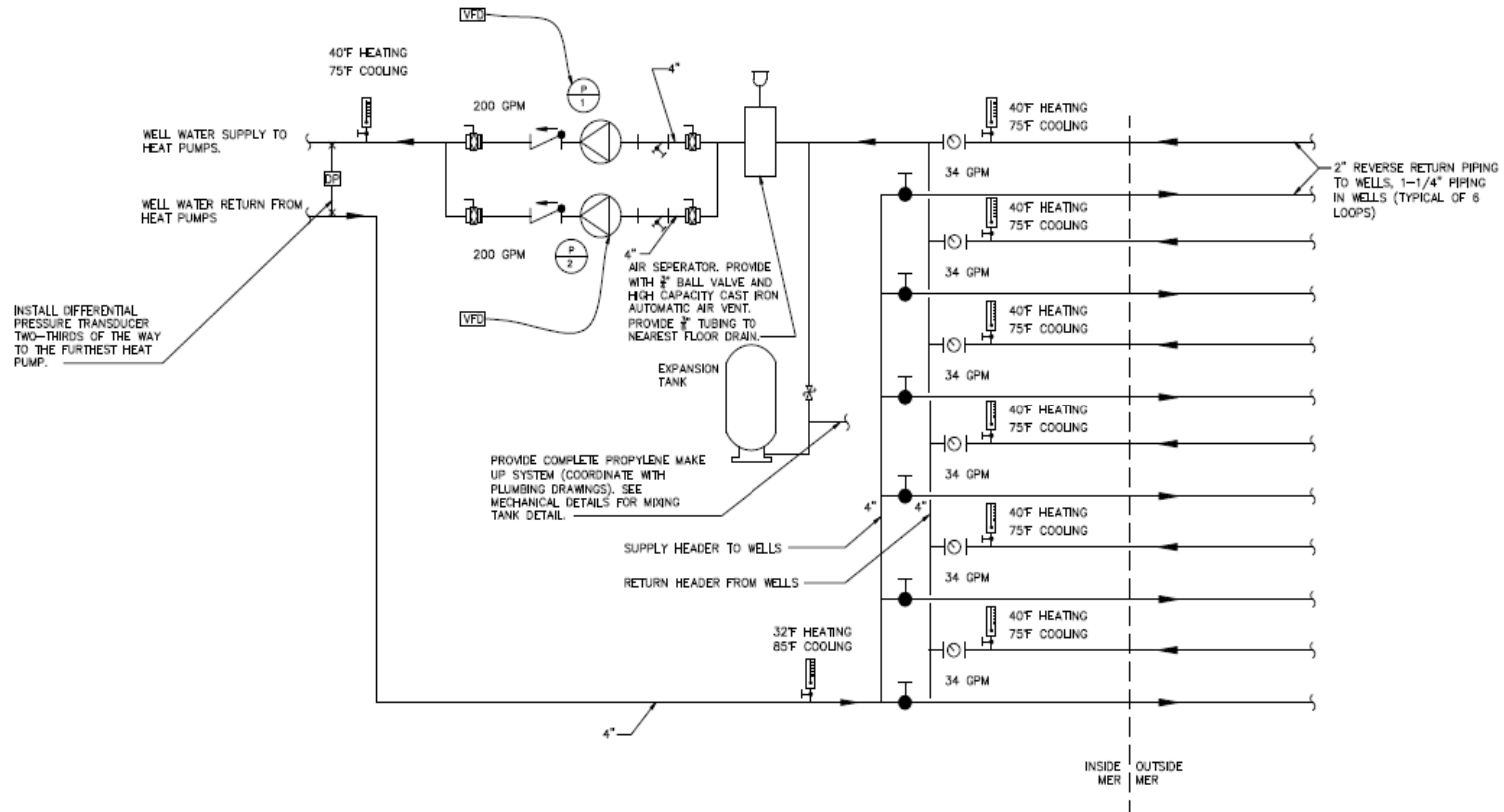
- Optimized sizing by accounting for High Performance Walls, Roof and Glazing
- High Efficiency Heat Pump System that is “ground coupled”
- High Efficiency Condensing Boiler – Second Floor only
- Distributed Outside Air System (DOAS)
- Heat Recovery
- Demand Control Ventilation
- System Zoning
- Modulation of Systems
- Solar Power
- Optimized Lighting Power Density and utilize daylight strategies to turn off lighting



Why Geothermal?

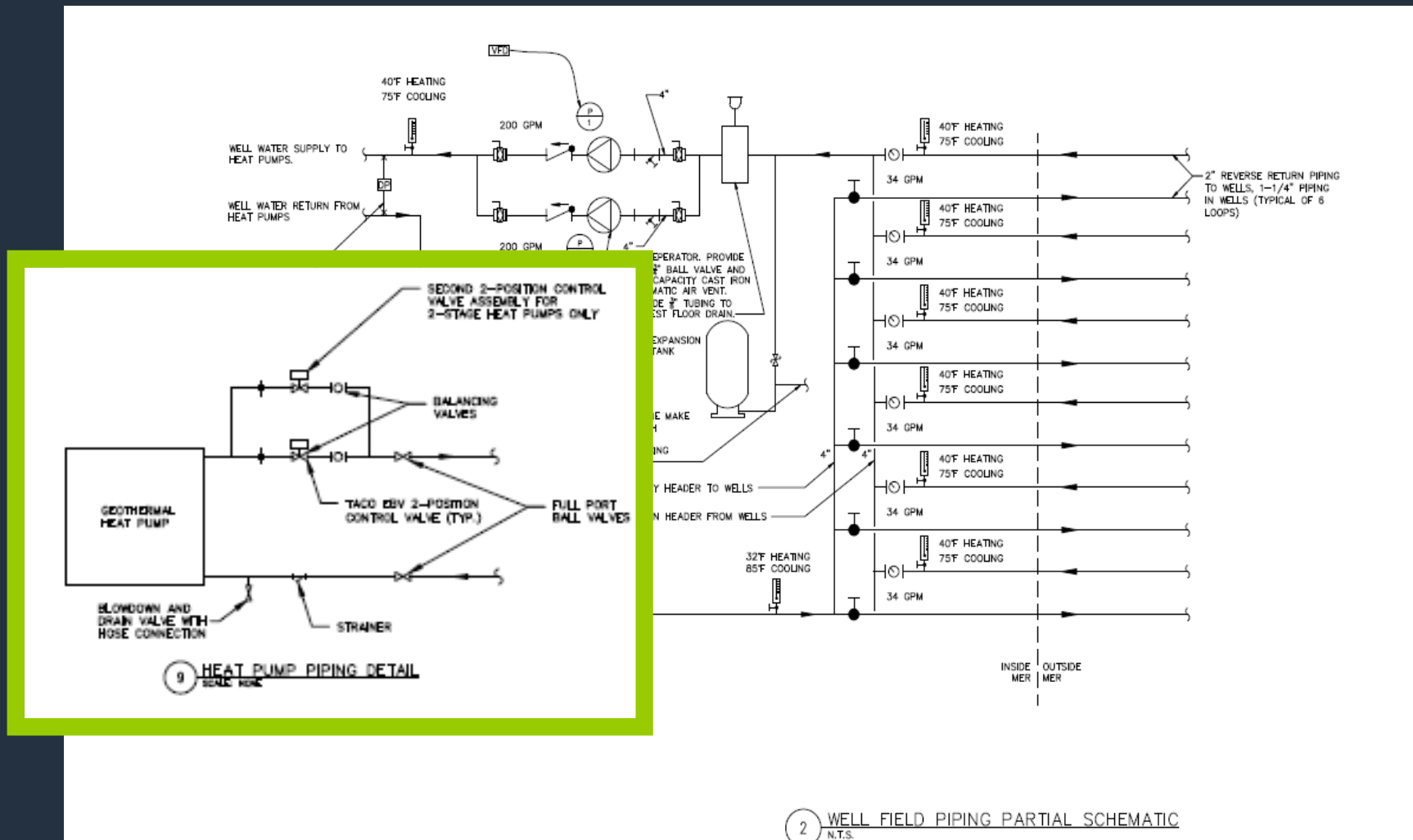


Geothermal

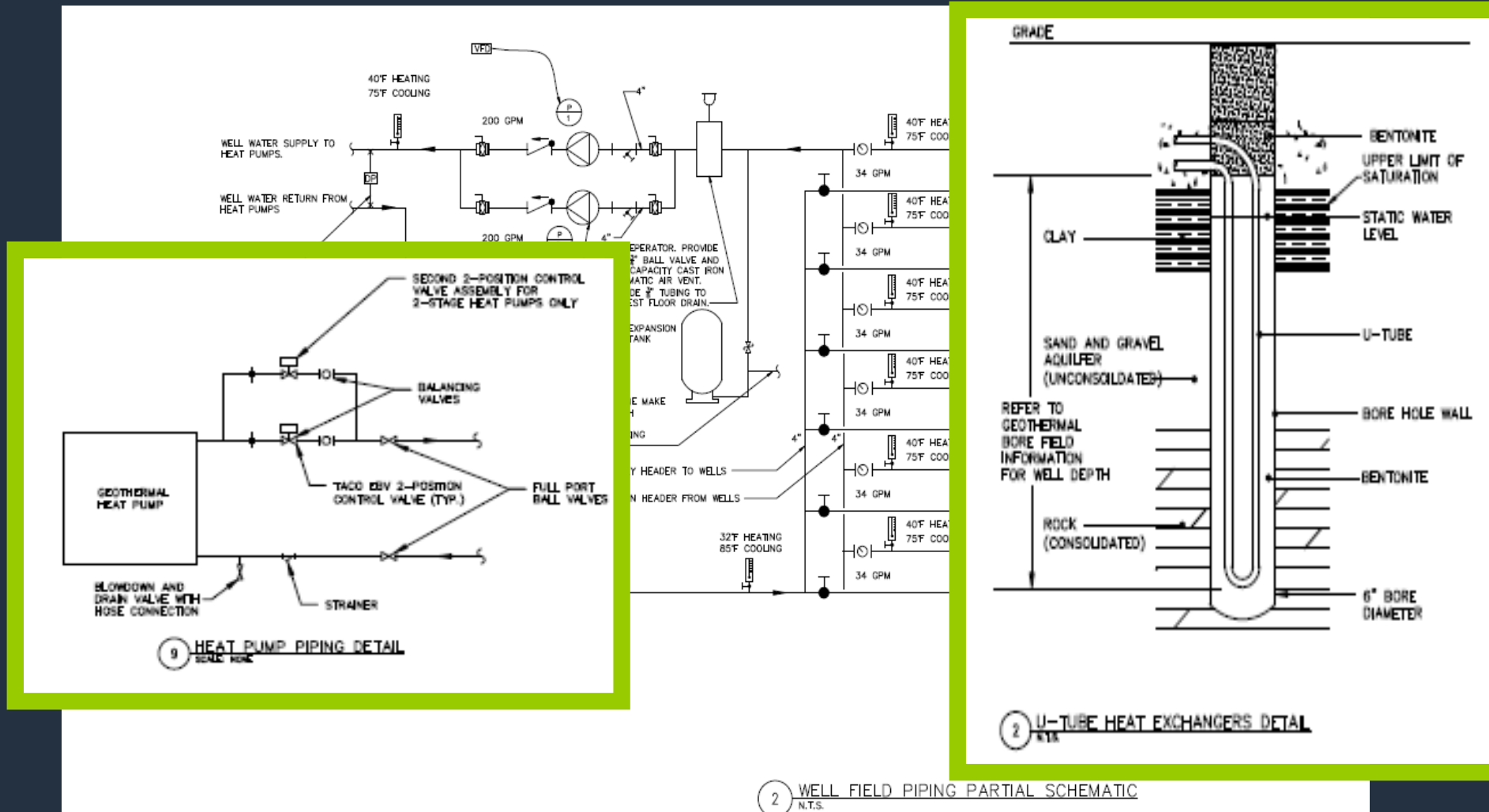


2 WELL FIELD PIPING PARTIAL SCHEMATIC
N.T.S.

Geothermal



Geothermal

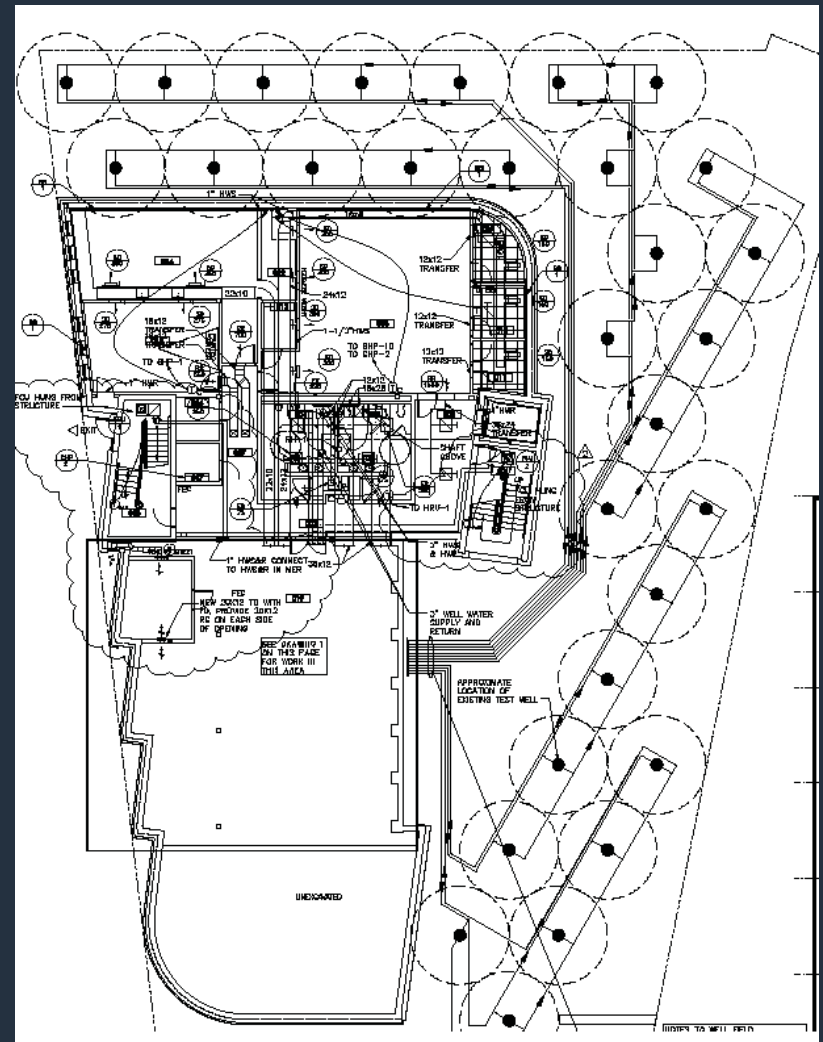


2 WELL FIELD PIPING PARTIAL SCHEMATIC
N.T.S.

Geothermal

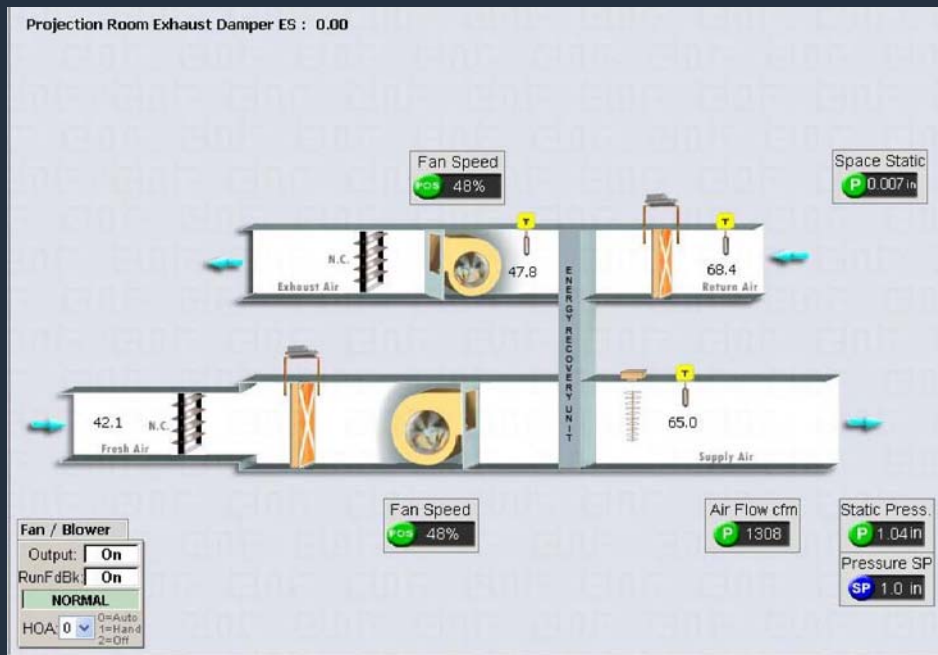


Date 01-31-08



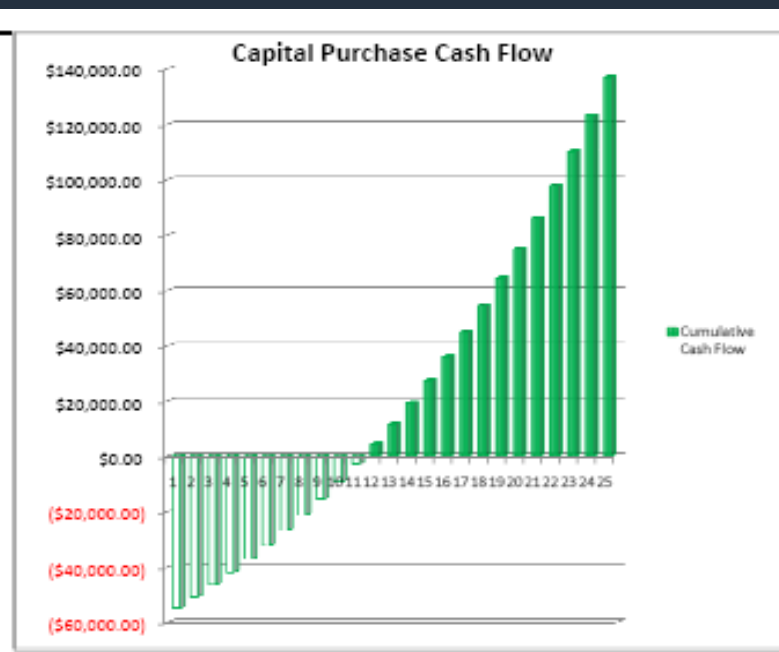
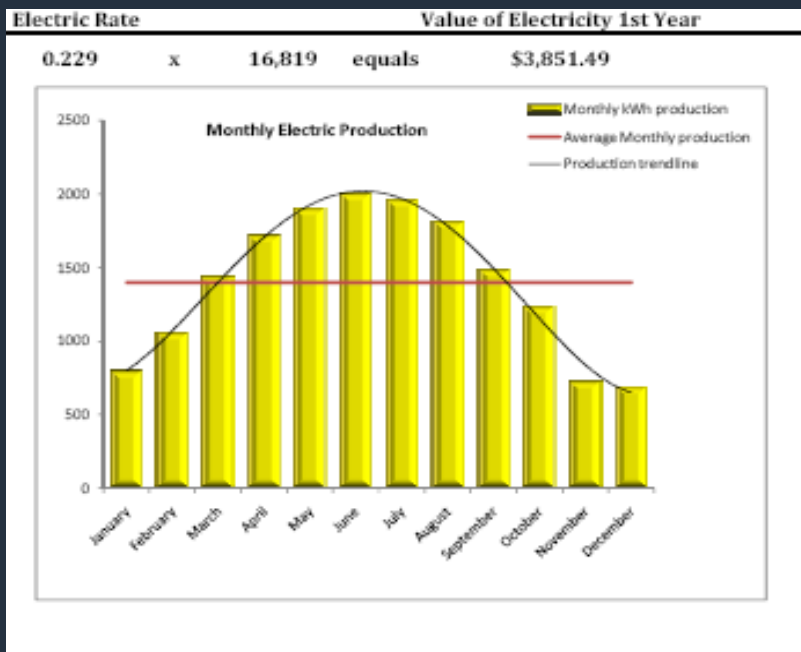
Heat Recovery and Distributed Outside Air

- Using Dedicated Outside Air helps ensure distribution of proper ventilation to each heat pump
- Heat recovery reduced energy and well field size and quantity
- System coupled with VFD's optimizes part load performance



High Performance - Alternative Energy Systems

- Solar power offsets approximately 8 to 10% of the electrical energy for the building



High Performance - Lighting and controls

- Optimize LPD (Lighting Power Density)
- Utilized Daylighting

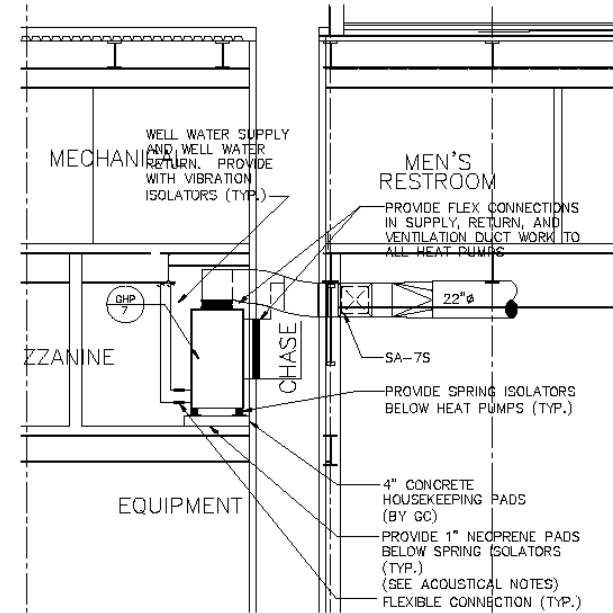


Design Challenges



- Complex Programming
- Stringent Acoustical Requirements
- Tight Floor to Floor Heights
- Thermal Comfort

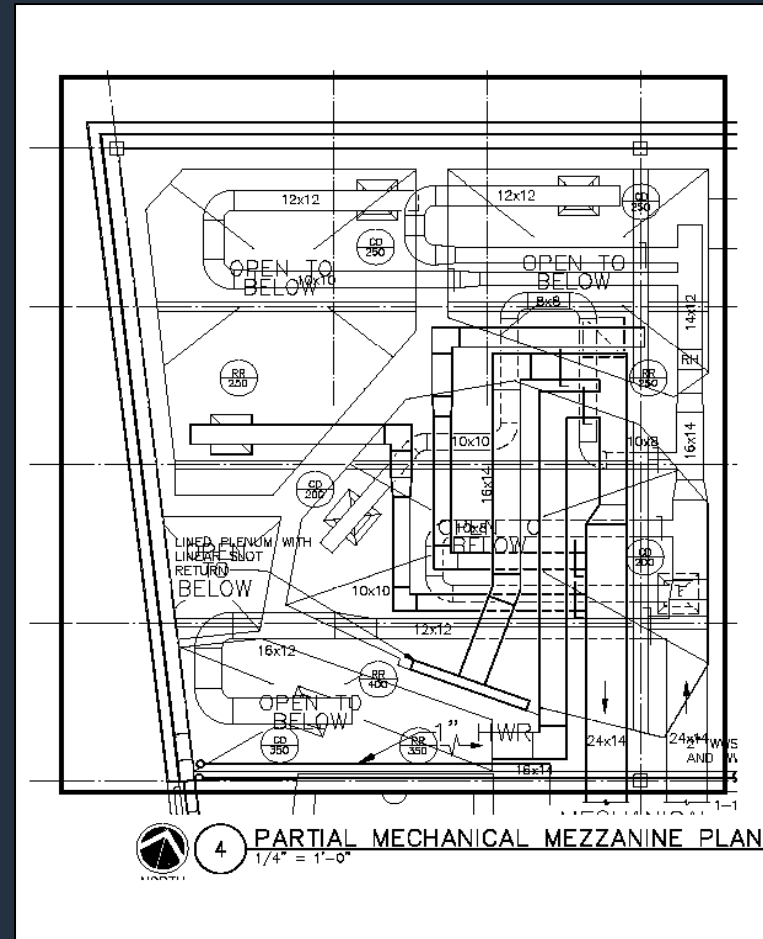
Design Challenges



2 BUILDING SECTION - AA
1/4" = 1'-0"

Design Challenge - Acoustics

Design NC Level – 20



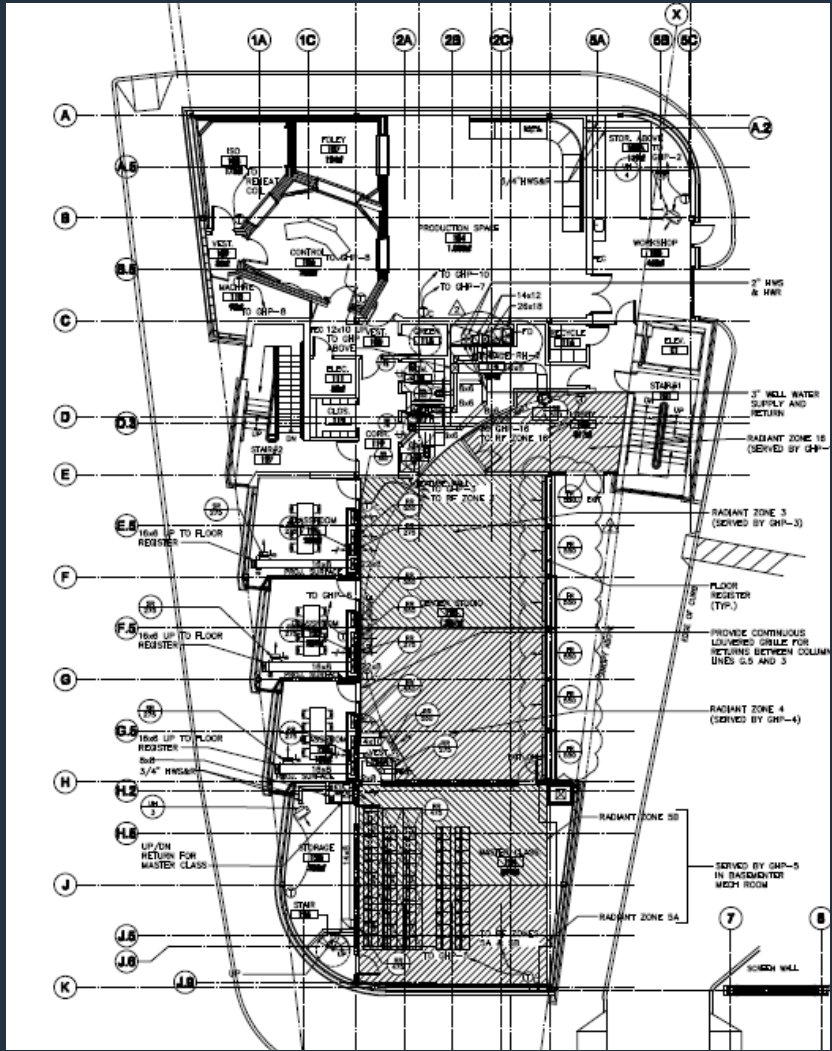
Design Challenge - Acoustics

Design NC Level -



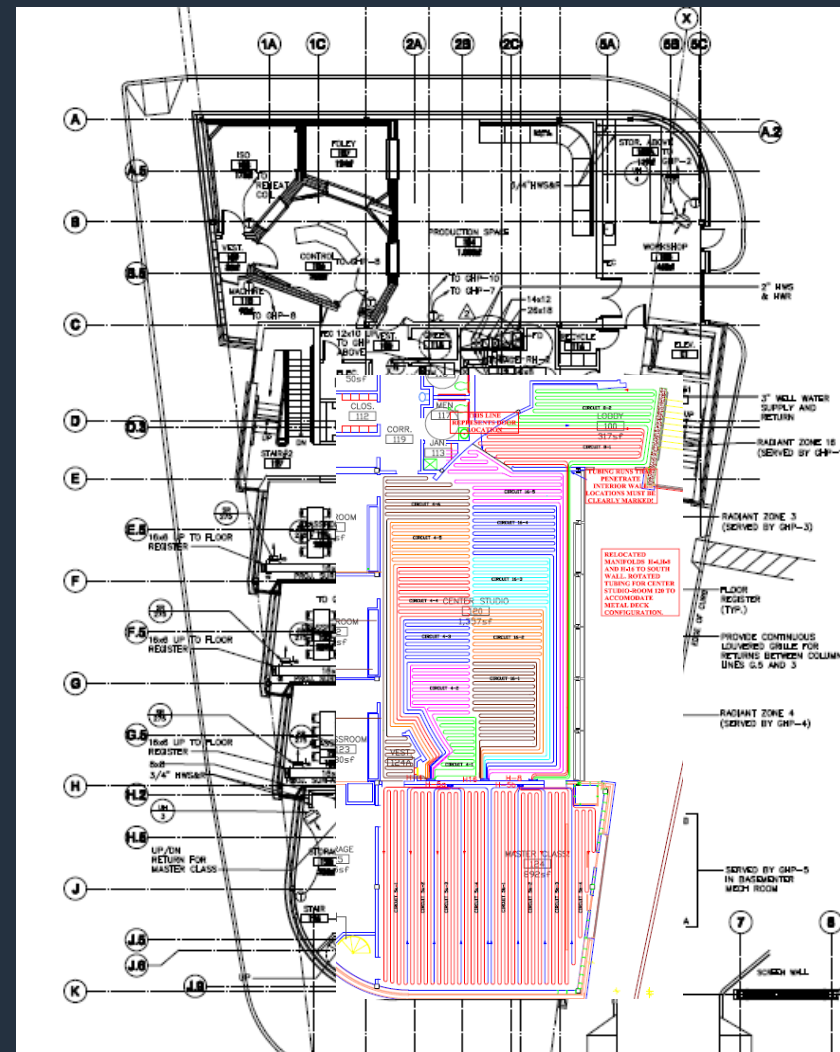
Date 01-31-08

Thermal Comfort Component



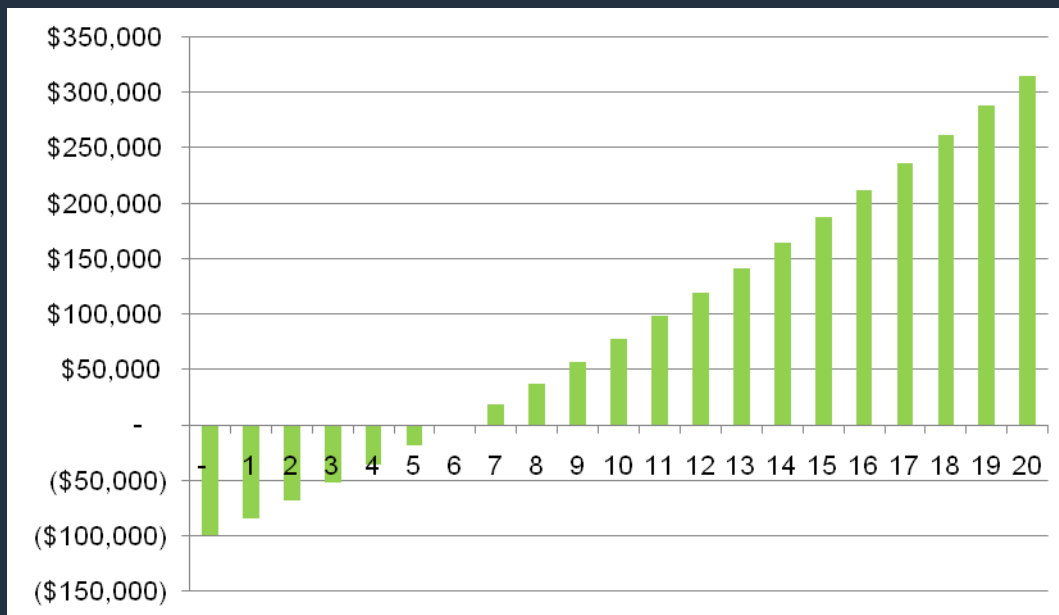
Thermal Comfort Component

From Jim Dolan



Energy Use and Life Cycle Savings

- 214,400 kWh of electricity
- 73.6 kW of peak electric demand
- 3,924 Therms of natural gas
- 45 kBtu/ft² energy use intensity
- \$46,300 annual energy cost (\$1.93/ft²)



Building Tours



Architectural Focus:

Two groups lead by
Erik Kaeyer, AIA, LEED AP & Daniel Jaconetti, AIA, LEED AP

Engineering Focus:

Two groups lead by
Jim Dolan, P.E., LEED AP & Steve Abbattista, P.E., LEED AP

Special Systems Focus:

Along the tour:

Technical Design – Francis Manzella

Geothermal - Frank Vetere, Facilities Director, JBFC & Daniel Norval, P.E.

PV Installation – Mercury Solar & John Torre, P.E., LEED AP

